



# CastTec

*Integra Collection*

Gas

Electric

Solid-fuel

Eco Design 2022 Ready

# Welcome to the CastTec Integra Collection

of cast-iron fireplaces and mantelpieces. The Integra concept combines a choice of unique cast-iron fireplace, with one of the most efficient and eco-friendly fires on the market today.

Suitable for gas, electric or solid fuel applications, Integra can be fitted into almost any flue type including homes with no chimney.

The Integra Collection is complimented by a stunning range of beautiful handcrafted marble, granite, limestone and slate mantelpieces.

All mantelpieces, cast-iron inserts and hearths are interchangeable so you can even design your own fireplace.

Some designs are contemporary and minimalist whilst others are more traditional and ornate.

Whatever your taste in fireplaces, we hope you enjoy viewing our Integra Collection and hope you will find something perfect to suit your home and your lifestyle.

### Supply Policy

Cast Tec and its distributors only supply reputable outlets that display its products in a showroom and have the facility to arrange a professional installation.

Professional advice and experience are essential when contemplating the purchase and fitting of an Integra fireplace as every fireplace installation is unique and is governed by regulations.

An installer for Integra Gas fires should be a 'Gas Safe' Registered Engineer.

An installer for the Solid Fuel Integra should be a HETAS Registered Engineer.

The installation of an Electric Integra suite requires a suitable electric socket or spur and a flat wall that is wider than the mantelshelf length. If a suitable electrical point is not available please consult a qualified electrician.

To locate your local Retailer please visit our website [www.casttec.co.uk](http://www.casttec.co.uk) or use the QR scan code.



## CONTENTS

FIREPLACE OPTIONS	3
INTEGRA GAS	5
INTEGRA ELECTRIC	33
INTEGRA SOLID FUEL	45
LIMESTONE MANTELS	58
ITALIAN CARRARA MANTELS	59
ROMAN STONE MANTELS	60
POLAR WHITE MANTELS	61
SLATE STONE MANTELS	62
BLACK GRANITE MANTELS	62
HEARTHES	63
OAK MANTELS	64
ARCHED INSERT GALLERY	66
TILED INSERT GALLERY	67
HAND PAINTED TUBELINE TILES	68
CAST-IRON SLEEVES	69
CAST-IRON SPECIFICATIONS	70
GAS FIRE SPECIFICATIONS	71

## FIREPLACE OPTIONS

### Cast-iron Fires



The Integra Collection boasts a range of beautiful cast-iron fireplaces that can be used in the most efficient and eco-friendly way for gas, electric and solid fuel applications.

Manufactured in the time honoured tradition, these castings can be plain or ornate and traditional or contemporary.

A gallery of cast-iron insert designs can be viewed on pages 66 to 67.

Castings can also have various finishes such as matt black, highlight polished (showing intricate detail) or traditional antique (graphite).

Some electric castings are manufactured in aluminium.

### Stone Mantels

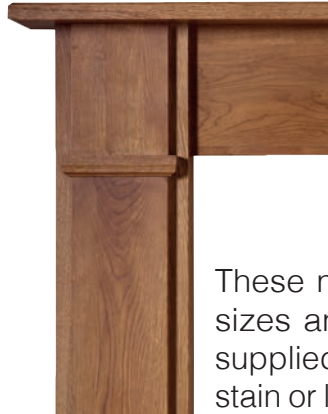


The Integra Collection has an extensive range of hand crafted marble, granite, slate and limestone mantelpieces.

All mantel designs suit all cast-iron inserts and hearths.

Integra stone mantel designs can be viewed on pages 60 to 62.

### Oak Mantels



The Integra Collection has an attractive range of solid oak mantelpieces, which can be viewed on pages 64 to 65.

These mantels come in various sizes and designs and can be supplied in a light or medium oak stain or left unfinished on request.

### Tiles

Some of our Integra cast-iron inserts require tile sets (or cast-iron sleeves). Our tiles are tube-lined and hand painted in the traditional way.

Two five tile runs or two cast-iron sleeves make up a complete tile-set. Tile designs have several colour options and can be viewed on pages 68 to 69.



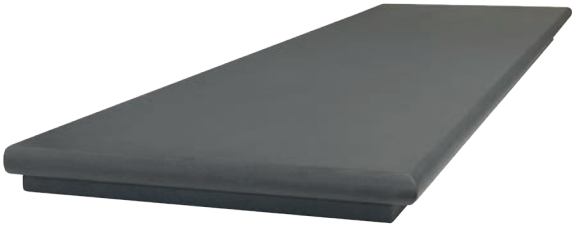
Med Poppy  
Tile



Med Poppy  
Sleeve

### Hearths

The Integra Collection has a range of beautiful hearths to compliment any chosen fireplace design.



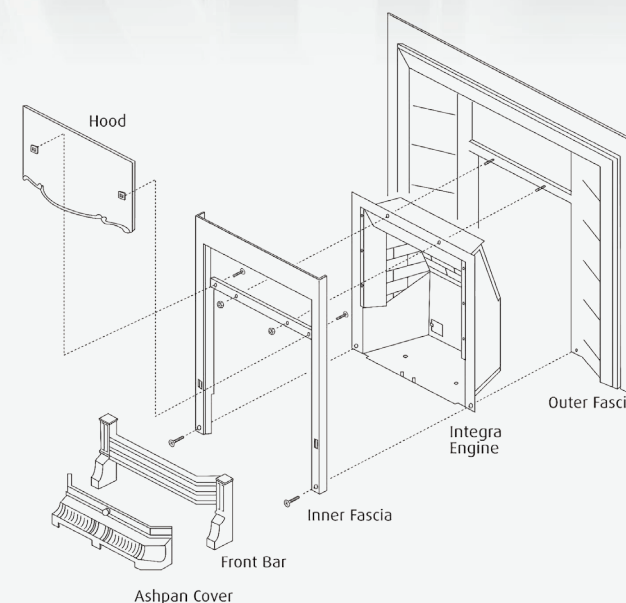
Hearths are boxed and lipped in the traditional way, or come in our Munro style, a more robust and contemporary design which includes a solid bullnose edge to match many of our mantel designs.





Oxford Integra Tiled Insert shown with Limerick cast-iron mantelpiece

## Integra Assembly



The **Integra Collection** boasts a range of gas appliances that fit into any flue application including homes without a chimney.

Called **Integra Engines**, these gas fires are manufactured in the UK and are amongst the most efficient

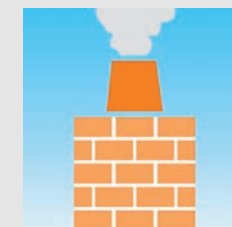
fires on the market today. Options depend upon the flue type you have in your home and this is set out clearly below.

Technical information such as outputs, efficiency and ignition options are available on page 71.

### Traditional Chimneys (Class 1)

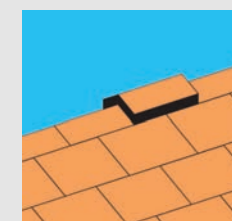
Traditional chimneys tend to be of brick construction with a stack on the roof (and terracotta pot).

Cast Tec offer the **Integra HO**, a decorative open fronted radiant option, the **Convactor Plus**, an open fronted high output option and the **Integra HE**, an efficient glass fronted option.



### Pre-cast Flues

Pre-cast flues are normally produced from concrete blocks which provide a rectangular flue way inside the wall cavity. The terminal usually consists of a ridge tile on the apex of the roof.

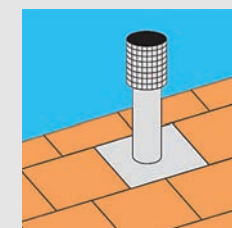


Cast Tec offer a slimline gas fire engine called the **Classic Multiflue**.

### Pre-fabricated Flues (Class 2)

Pre-fabricated flues are usually constructed of steel sections with a metal terminal on the roof.

Cast Tec offer the **Integra HO**, a decorative open fronted radiant option, the **Convactor Plus**, an open fronted high output option and the **Integra HE**, an efficient glass fronted option.



### No Chimney Options

For rooms with no chimney or flue but a suitable external wall Cast Tec offer a **Balanced Flue** version of the Integra HE gas fire engine.





# Royal

The Royal Integra is a plain arched cast-iron insert in a matt black finish. The black finish creates a nice contrast to the light colour of the mantelpiece.

The mantel shown is the rather majestic looking Hexham in pure Turkish Limestone. This mantel is also available in Polar White, Roman Stone and Slate Stone (see pages 60 to 62 for more options).

The hearth is honed black granite (see hearth options page 63).

<b>Cast</b>	Royal
Finish	Matt Black
Engine	Gas
<b>Mantel</b>	Hexham
Material	Turkish Limestone
Shelf	1350mm (53")
<b>Hearth</b>	
Material	Honed Black Granite
Size	1350mm x 380mm





# Majestic

The Majestic Integra is a plain arched cast-iron insert, in a matt black finish, with only the outer band polished.

The mantelpiece shown is the Flat Victorian in Turkish Limestone. This mantel is also available in honed black granite and Italian Carrara.

A more contemporary version of the Flat Victorian is the Chilton mantel, shown on page 46. The Chilton and matching Munro hearth both sport rounded bullnose edges giving a softer look and feel.

The complete range of available mantelpieces is shown from pages 58 to 65.

<b>Cast</b>	Majestic
Finish	Highlight Polished
Engine	Gas
<b>Mantel</b>	Flat Victorian
Material	Turkish Limestone
Shelf	1350mm (53") or 1500mm (59")
<b>Hearth</b>	Boxed & Lipped
Material	Polished Black Granite
Size	1350mm x 380mm or 1500mm x 450mm





# Regal

The Regal Integra is a plain arched insert with the inner and outer bands highlight polished along with the canopy rim and fire-front.

The mantel shown is the stylish Kensington in pure Turkish Limestone. This mantel is also available in Polar White, Roman Stone and Slate Stone.

All mantelpieces in the Integra Collection are interchangeable (see pages 58 to 65 for more options).

The hearth is honed black granite (see hearth options page 63).

<b>Cast</b>	Regal
Finish	Highlight Polished
Engine	Gas

<b>Mantel</b>	Kensington
Material	Turkish Limestone
Shelf	1350mm (53")

<b>Hearth</b>	
Material	Honed Black Granite
Size	1350mm x 380mm





# Viscount

The Viscount Integra is a plain arched cast-iron insert with a matt black outer fascia and highly polished interior. The reflection of the polished interior onto the polished black granite hearth is quite exquisite.

The Viscount is shown with the Durham Mantel in Crema Marfil pure marble from Spain. Pure marbles are individually unique and their beauty tends to be their variation in colour and veining.

If you are likely to be stressed by the inconsistency of pure marble, the Durham is also available in Roman Stone, a man-made micro marble which consists of 95% crushed marble and 5% resin. This mixture has no veining and has the advantage of being consistent in colouration.

<b>Cast</b>	Viscount
Finish	Half Polish
Engine	Gas
<b>Mantel</b>	Durham
Material	Crema Marfil
Shelf	1350mm (53") or 1500mm (59")
<b>Hearth</b>	Boxed & Lipped
Material	Polished Black Granite
Size	1350mm x 380mm or 1500mm x 450mm





# Marquis

The Marquis Integra is a plain arched cast-iron insert with a stunning fully polished finish. This creates a very contemporary feel and there's no doubt that this model likes to be noticed.

The Marquis is shown with the rather splendid Durham Mantel in polished Black Granite. A matching granite hearth creates a strong contrast against the full polish sheen of the Marquis casting.

The Durham Mantel is also available in Crema Marfil and Roman Stone marbles. The complete range of available mantelpieces is shown from pages 58 to 65.

<b>Cast</b>	Marquis
Finish	Full Polish
Engine	Gas
<b>Mantel</b>	Durham
Material	Black Granite
Shelf	1350mm (53") or 1500mm (59")
<b>Hearth</b>	Boxed & Lipped
Material	Polished Black Granite
Size	1350mm x 380mm or 1500mm x 450mm





# Ashbourne Black

The Ashbourne Integra is a decorative arched insert with intricate detail to the inner and outer bands and the canopy. A matt black finish produces a more subdued and discreet look compared to the boldness of the polished model.

The mantel shown is the Verona in Carrara pure Italian marble. This mantel displays attractive hand carved corbels supporting the shelf.

All mantelpieces in the Integra Collection are interchangeable (see pages 58 - 65 for more options).

The hearth shown is tiled and slabbed in one piece using Ciara Slate scratch resistant porcelain tiles.

<b>Cast</b>	Ashbourne
Finish	Matt Black
Engine	Gas
<b>Mantel</b>	Verona
Material	Italian Carrara
Shelf	1500mm (59")
<b>Hearth</b>	Slabbed
Material	Ciara Slate Tiles
Size	1460mm x 438mm





# Ashbourne Polished

The Ashbourne Integra is a decorative arched insert with the inner and outer bands polished along with the canopy and fire-front. The polished area highlights the intricate detail to the casting.

The mantel shown is the William IV in Carrara pure Italian marble. This mantel displays impressive corbels and an incised design.

All mantelpieces in the Integra Collection are interchangeable (see pages 58 to 65 for more options).

The honed black granite hearth is boxed and lipped (see hearth options page 63).

<b>Cast</b>	Ashbourne
Finish	Highlight Polished
Engine	Gas

<b>Mantel</b>	William IV
Material	Italian Carrara
Shelf	1500mm (59")

<b>Hearth</b>	Boxed & Lipped
Material	Honed Black Granite
Size	1500mm x 450mm





# Aston

The Aston Integra is a decorative tiled insert shown here in an antiqued graphite finish. The Aston is also available in a matt black or highlight polished finish.

The Aston is shown inside the Brampton solid oak mantel in a light oak finish. The Brampton is a simple design with plain corbels. Our full range of wood mantels can be viewed on pages 64 and 65.

A set of ivory and blue Flag Iris tiles are shown in the casting.

The hearth is box and lipped in a discreet honed granite.

<b>Cast</b>	Aston
Finish	Antique
Engine	Gas
<b>Mantel</b>	Brampton
Material	Solid Oak
Shelf	1370mm (54")
<b>Tiles</b>	Flag Iris
Colour	Ivory Blue
<b>Hearth</b>	Boxed & Lipped
Material	Honed Black Granite
Size	1350mm x 380mm





# Eden

The Eden Integra is a traditional tiled insert with an ornate patterned canopy shown here in an antique (graphite) finish. This model is also available in a matt black finish.

The Eden is displayed inside the Sherwood solid oak mantel and is shown with a set of Foxglove hand painted tiles in burgundy and ivory.

Our full range of tiles and cast-iron sleeve alternatives are shown on pages 68 and 69 and our full range of oak mantels can be seen on pages 64 and 65 (all interchangeable).

<b>Cast</b>	Eden
Finish	Antique
Engine	Gas
<b>Mantel</b>	Sherwood
Material	Solid Oak
Shelf	1370mm (54")
<b>Tiles</b>	Foxglove
Colour	Ivory Burgundy
<b>Hearth</b>	Boxed & Lipped
Material	Honed Black Granite
Size	1350mm x 380mm





# Glen

The Glen Integra is a traditional tiled insert with an intricate patterned design, which includes an Adam style urn on the canopy. The Glen is shown as matt black but is also available in a highlight polished finish.

The mantel displayed is the Coniston in solid oak. Our full range of wood mantels can be viewed on pages 64 and 65.

The Glen is shown with a set of Tulip hand painted tiles in honey and yellow. Our full range of tile sets and cast-iron sleeve alternatives can be viewed on pages 68 and 69.

The hearth is box and lipped in honed granite.

<b>Cast</b>	Glen
Finish	Matt Black
Engine	Gas
<b>Mantel</b>	Coniston
Material	Solid Oak
Shelf	1370mm (54")
<b>Tiles</b>	Tulip
Colour	Honey Yellow
<b>Hearth</b>	Boxed & Lipped
Material	Honed Black Granite
Size	1350mm x 380mm





# Jesmond Black

The Jesmond Integra is a plain cast-iron tiled insert suitable for gas fire engines.

Finished in matt black, the Jesmond has a contemporary feel and is shown with a set of Art Deco cast-iron sleeves rather than the usual tile set.

The mantelpiece shown is the Ripon in Roman Stone micro marble. The complete range of available mantelpieces is shown from pages 58 to 65.

The hearth is boxed and lipped in polished black granite (see page 63 for more options).

<b>Cast</b>	Jesmond
Finish	Matt Black
Engine	Gas
<b>Mantel</b>	Ripon
Material	Roman Stone
Shelf	1350mm (53")
<b>Sleeves</b>	Art Deco
Finish	Matt Black
<b>Hearth</b>	Boxed & Lipped
Material	Polished Black Granite
Size	1350mm x 380mm





# Jesmond Full Polish

The Jesmond Integra is a plain tiled insert shown here in a stunning fully polished finish. This finish creates a very contemporary look and the addition of a set of tiles or cast-iron sleeves allows for the choice of a unique combination.

The Jesmond is shown inside the Ripon Mantel in Polar White marble.

The Ripon Mantel is also available in Roman Stone. The complete range of available mantelpieces is shown from pages 58 to 65.

A honed granite hearth creates a nice contrast to the full polish sheen of the casting.

<b>Cast</b>	Jesmond
Finish	Full Polish
Engine	Gas
<b>Mantel</b>	Ripon
Material	Polar White
Shelf	1350mm (53")
<b>Tiles</b>	Thistle of Tay
Colour	Ivory Blue
<b>Hearth</b>	Boxed & Lipped
Material	Honed Black Granite
Size	1350mm x 380mm





## Regal Combination



The Regal Combination is a plain cast-iron fireplace suitable for all Integra gas appliances and includes a small top shelf, thereby reducing the need for a separate mantelpiece.

The Regal can be polished around two arched bands, the canopy and firefront, or simply matt

black for a more understated look.

The mantel shelf is only 1120mm (44") making this fireplace ideal to suit a small living room.

The polished black granite hearth is 1050mm x 380mm (42" x 15").

## Ashbourne Combination



The Ashbourne Combination is a decorative cast-iron fireplace suitable for all Integra gas appliances and includes a small top shelf, thereby reducing the need for a separate mantelpiece.

The Ashbourne can be highlight polished, showing off the intricate detail of the casting,

or simply matt black for a more understated look.

The mantel shelf is 1120mm (44") making this fireplace ideal to suit a small chimney breast.

The polished black granite hearth is 1050mm x 380mm (42" x 15").





Viscount Electric Integra and Electraflame shown with Athena Black Granite Mantel.

# INTEGRA ELECTRIC

The Electric Integra is a range of cast-iron and aluminium fireplaces which integrate majestically with a realistic electric fire called an Electraflame.

The unique selling point for the Electric Integra is the fact that the whole appliance can be housed inside a standard 75mm (3") rebated mantelpiece. This means that the complete fireplace can be installed against any suitable flat wall.

All mantelpieces and hearths within the Integra Collection are suitable to be used with electric installations; therefore it is possible to design your own individual fireplace.

**Electraflame Controls**

ON/OFF    1kW Fan    2kW Fan

Manual controls are cleverly positioned just behind the cast aluminium canopy so that they are not too prominent but can be easily accessed without too much bending over. A remote control option is also available.

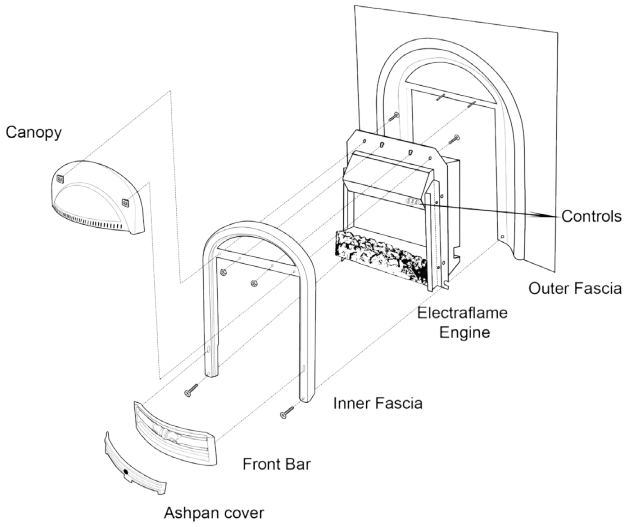


Electraflame

The Electraflame Engine has a realistic flame effect and produces up to 2kW in fan-assisted heat if required, however, in the summer months you may opt for the attractive flame effect only.

Scan the QR to see a live electricflame

## Assembly Details







# Ashbourne Polished

The Ashbourne Electric Integra is a decorative arched insert with the inner and outer bands, canopy and fire-front polished to highlight the intricate detail. This design is also available in a matt black finish.

The mantelpiece shown is the Corinthian in Italian Carrara marble. This mantel has a two tier shelf and two impressive hand carved acanthus leaf motifs.

All mantelpieces in the Integra Collection are interchangeable and can be viewed on pages 58 to 65.

The polished black granite hearth is boxed and lipped (see hearth options page 63).

<b>Cast</b>	Ashbourne Electric
Finish	Highlight Polished
Engine	Electric
<b>Mantel</b>	Corinthian
Material	Italian Carrara
Shelf	1500mm (59")
<b>Hearth</b>	Boxed & Lipped
Material	Polished Black Granite
Size	1500mm x 450mm





# Marquis

The Marquis Electric shown is a fully polished arched insert contrasting beautifully against the black granite mantel and hearth.

The mantelpiece shown is the Flat Victorian in honed black granite. This mantel is also available in Italian Carrara and Turkish Limestone.

All mantelpieces in the Integra Collection have an internal rebate of 75mm (3”) allowing the Electric Integra range to fit flush against a flat wall (no chimney is required).

The honed black granite hearth is boxed and lipped (see hearth options page 63).

<b>Cast</b>	Marquis Electric
Finish	Full Polish
Engine	Electric

<b>Mantel</b>	Flat Victorian
Material	Honed Black Granite
Shelf	1350mm (53”) or 1500mm (59”)

<b>Hearth</b>	Boxed & Lipped
Material	Honed Black Granite
Size	1350mm x 380mm or 1500mm x 450mm





# Regal

The Regal Electric Integra is a plain arched insert with the inner and outer bands highlight polished along with the canopy rim and fire-front.

The mantel shown is the stylish Durham in Roman Stone micro marble. This mantel is also available in Crema Marfil pure marble and polished Black Granite.

All mantelpieces in the Integra Collection have an internal rebate of 75mm (3”) allowing for Electric Integra to fit flush against a flat wall.

The honed black granite hearth is boxed and lipped (see hearth options page 63).

<b>Cast</b>	Regal Electric
Finish	Highlight Polished
Engine	Electric

<b>Mantel</b>	Durham
Material	Roman Stone
Shelf	1350mm (53”) or 1500mm (59”)

<b>Hearth</b>	Boxed & Lipped
Material	Honed Black Granite
Size	1350mm x 380mm or 1500mm x 450mm





# Royal

The Royal Electric Integra is a plain arched insert in a matt black finish.

The mantel shown is the beautiful Hexham in Roman Stone micro marble. This mantel is also available in Polar White micro marble, Slate Stone and Crema Marfil pure mable.

All mantelpieces in the Integra Collection have an internal rebate of 75mm (3”) allowing for Electric Integra to fit flush against a flat wall.

The honed black granite hearth is boxed and lipped (see hearth options page 63).

<b>Cast</b>	Royal Electric
Finish	Matt Black
Engine	Electric
<b>Mantel</b>	Hexham
Material	Roman Stone
Shelf	1500mm (59”)
<b>Hearth</b>	Boxed & Lipped
Material	Honed Black Granite
Size	1500mm x 450mm



## Regal Combination



The Regal Electric Combination is a plain cast-aluminium fireplace which includes a small top shelf, thereby reducing the need for a separate mantelpiece.

The Regal Electric is polished around the arched band, canopy and firefront, or can be supplied in matt black for a more understated look.

A total width of only 1120mm (44") makes this fireplace ideal to suit a small living room. Another advantage of Electric Combinations is that they can be fitted against a suitable flat wall (no need for a chimney).

The honed black granite hearth is 1050mm x 380mm (42" x 15").

## Ashbourne Combination



The Ashbourne Electric Combination is a decorative cast-aluminium fireplace and includes a small top shelf, thereby reducing the need for a separate mantelpiece.

The Ashbourne Electric can be highlight polished, showing off the intricate detail of the casting, or simply matt black for a more understated look.

A total width of only 1120mm (44") makes this fireplace ideal to suit a small living room. Another advantage of Electric Combinations is that they can be fitted against a suitable flat wall (no need for a chimney).

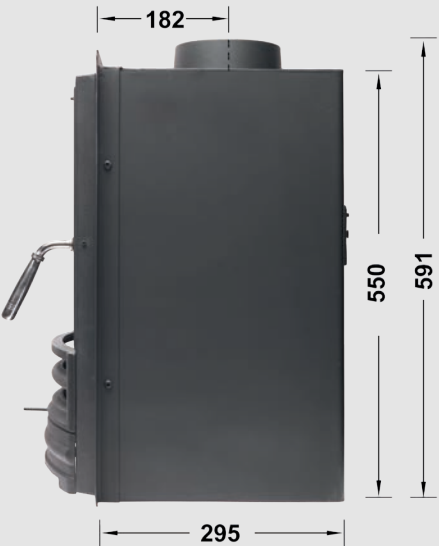
The honed black granite hearth is 1050mm x 380mm (42" x 15").





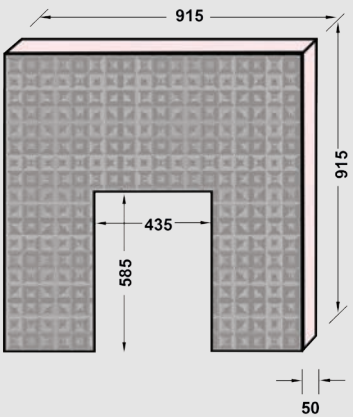
The Solid Fuel Integra Inset is shown with optional Trim, Mosaic tiled panel and Hexham mantel.

SFI Inset



Mosaic Panel

The Mosaic Panel is slabbed for Solid Fuel .



measurements in millimetres

Eco Design 2022 Ready

Solid Fuel Integra can be used in Smoke Controlled Areas (DEFRA exempt) and attains European Efficiency and Emission Requirements for 2022 making it 'Eco Design' ready.

INTEGRA SOLID FUEL

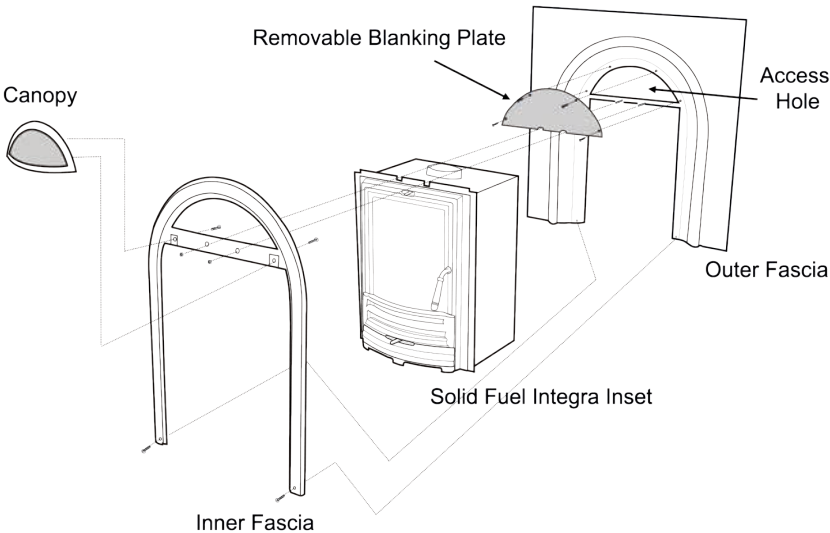
The CastTec Solid Fuel Integra (SFI) is a range of cast-iron inserts that integrate with one of the most efficient 5kW output stoves on the market today. Inserts can be viewed on pages 44 to 57.

SFI benefits from Triple Burn Technology, with **Primary Air Burn** (lever in ash pan cover), **Airwash Secondary Burn** (lever top of door) and **Tertiary Air** (inlets inside the rear of the stove).

A multi-fuel grate allows SFI to burn seasoned wood and smokeless fuels. SFI is also available as a stand alone inset with optional trim.

Whilst all SFI insert designs, mantels and hearths are interchangeable, it is advisable to use only natural materials for the mantelpiece and hearth. In addition, hearths should be cut into sections to allow for expansion.

FUEL TYPE	WOOD	ANTHRACITE
Heat Output	Nominal 5kW	
Efficiency	76.1%	79.9%
CO Emissions	0.10 vol%	0.04 vol%
Construction	Steel & Cast Iron	
Net Weight	75 Kg	
Flue Outlet	Top (125mm)	
Air Vent	No	







# Royal

The Royal Solid Fuel Integra is a plain arched cast-iron insert in a matt black finish. The black finish creates a nice contrast to the light colour of the mantelpiece.

The mantel shown is the Chilton in Turkish Limestone. This model is similar in design to our Flat Victorian; however, the mantelshelf and mouldings have a smart bullnose edge giving a more contemporary twist.

The hearth is polished black granite in our sturdy Munro style, which compliments the Chilton mantel. Hearths for solid fuel may need to be sectioned to allow for expansion (see hearth options page 63).

<b>Cast</b>	Royal SFI
Finish	Matt Black
Engine	Solid Fuel
<b>Mantel</b>	Chilton
Material	Turkish Limestone
Shelf	1350mm (53") or 1500mm (59")
<b>Hearth</b>	Munro Bullnose
Material	Polished Black Granite
Size	1350mm x 450mm or 1500mm x 450mm





# Majestic

The Majestic Solid Fuel Integra is a plain arched cast-iron insert, in a matt black finish, with only the outer band polished.

The mantelpiece shown is the Flat Victorian in Italian Carrara. This traditional mantel is also available in honed black granite and Turkish limestone. The complete range of available mantelpieces can be viewed on pages 58 to 65.

The hearth is polished black granite in our sturdy Munro style. Hearths for solid fuel may need to be sectioned to allow for expansion (see hearth options on page 63).

<b>Cast</b>	Majestic SFI
Finish	Highlight Polished
Engine	Solid Fuel

<b>Mantel</b>	Flat Victorian
Material	Italian Carrara
Shelf	1350mm (53") or 1500mm (59")

<b>Hearth</b>	Munro Bullnose
Material	Polished Black Granite
Size	1350mm x 450mm or 1500mm x 450mm





# Ashbourne

The Ashbourne Solid Fuel Integra is a decorative arched insert with the inner and outer bands polished along with the canopy and fire-front. The polished area highlights the intricate detail to the casting.

The Ashbourne is also available in a matt black finish.

The mantel shown is the Cotswold in Turkish limestone. This mantel displays impressive corbels and a beautifully rounded edge to the shelf and mouldings to match the polished bullnose of the hearth below.

The hearth is polished black granite in our sturdy Munro style. Hearths for solid fuel may need to be sectioned to allow for expansion (see hearth options on page 63).

<b>Cast</b>	Ashbourne SFI
Finish	Highlght Polished
Engine	Solid Fuel
<b>Mantel</b>	Cotswold
Material	Limestone
Shelf	1350mm (53") or 1500mm (59")
<b>Hearth</b>	Munro Bullnose
Material	Polished Black Granite
Size	1350mm x 450mm or 1500mm x 450mm



# Oxford

The Oxford Solid Fuel Integra is a decorative tiled insert shown here in a highlight polished finish. A beautiful art nouveau floral design depicted on the canopy compliments the Mediterranean Poppy hand painted tile set. The Oxford Integra is also available in a matt black or antique finish.

The mantelpiece shown is the Hexham in Slate Stone (this larger size has slips internally). Our complete range of available mantelpieces can be viewed on pages 58 to 65.

The hearth is shown in polished black granite. Hearths for solid fuel may need to be sectioned to allow for expansion (see hearth options on page 63).

<b>Cast</b>	Oxford SFI
Finish	Highlight Polished
Engine	Solid Fuel

<b>Mantel</b>	Hexham
Material	Slate Stone
Shelf	1500mm (59")

<b>Tiles</b>	Mediterranean Poppy
Colour	Ivory Burgundy

<b>Hearth</b>	Boxed & Lipped
Material	Honed Black Granite
Size	1500mm x 450mm







# Aston Antique

The Aston Solid Fuel Integra is a decorative tiled insert shown here in an antiqued graphite finish. This model is also available in a matt black or highlight polished finish.

The Aston is shown inside a traditional Victorian Corbel mantel in Turkish limestone. The complete range of available mantelpieces can be viewed on pages 58 to 65.

The tile set shown is the Tulip design in Ivory Blue.

The hearth is polished black granite in our sturdy Munro style. Hearths for solid fuel may need to be sectioned to allow for expansion (see hearth options on page 63).

<b>Cast</b>	Aston SFI
Finish	Antique
Engine	Solid Fuel
<b>Mantel</b>	Victorian Corbel
Material	Limestone
Shelf	1350mm (53") or 1500mm (59")
<b>Tiles</b>	Tulip
Colour	Ivory Blue
<b>Hearth</b>	Munro Bullnose
Material	Polished Black Granite
Size	1350mm x 450mm or 1500mm x 450mm



# Aston

The Aston Solid Fuel Integra is a decorative tiled insert shown here in a highlight polished finish. This model is also available in a matt black or antique finish.

The Aston is shown inside the Kensington Slate Stone mantelpiece. The complete range of available mantelpieces can be viewed on pages 58 to 65.

The tile set shown is the Tulip design in Ivory Burgundy.

The hearth is Honed Black Granite in our sturdy Munro style. Hearths for solid fuel may need to be sectioned to allow for expansion (see hearth options on page 63).

<b>Cast</b>	Aston SFI
Finish	Highlight Polished
Engine	Solid Fuel
<b>Mantel</b>	Kensington
Material	Slate Stone
Shelf	1350mm (53")
<b>Tiles</b>	Tulip
Colour	Ivory Burgundy
<b>Hearth</b>	Munro Bullnose
Material	Honed Black Granite
Size	1350mm x 450mm





# LIMESTONE MANTELS



**Chilton**



**\* Kensington**



**Cotswold**



**\* Hexham 1350**

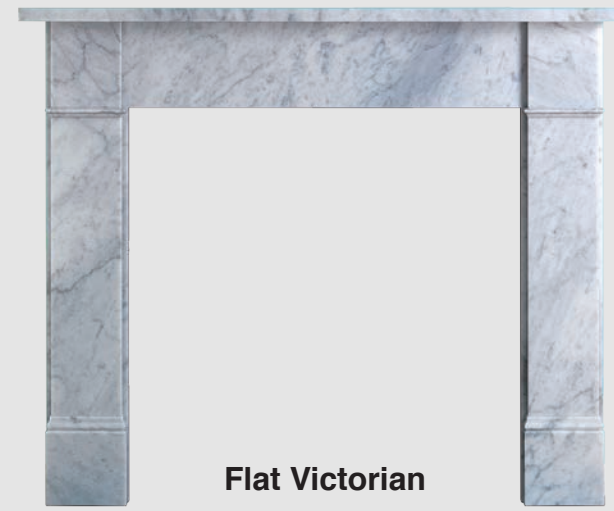


**Victorian Corbel**



**\* Hexham 1500**

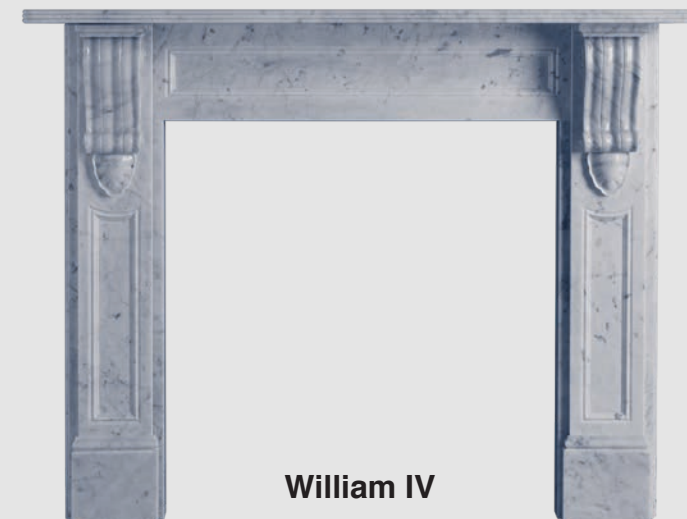
# ITALIAN CARRARA MANTELS



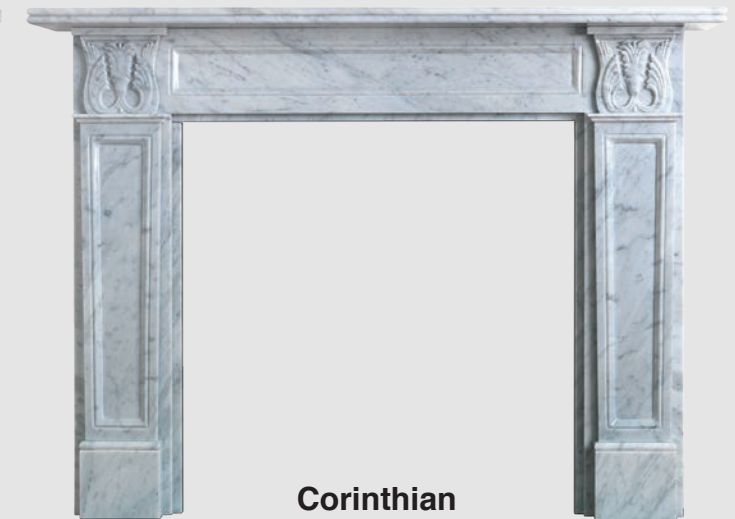
**Flat Victorian**



**\* Verona**



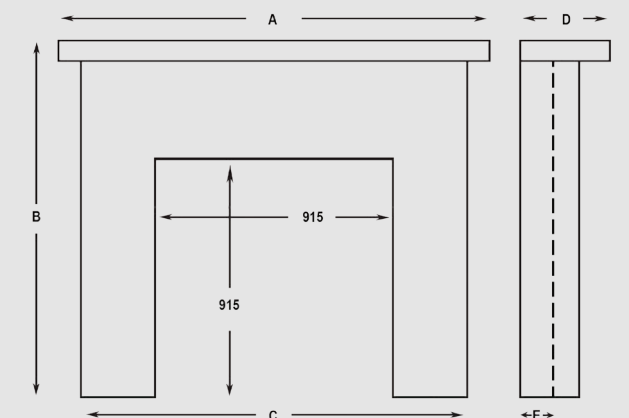
**William IV**



**Corinthian**

## Mantel Dimensions

	A	B	C	D	E
Chilton	1500 *	1145	1335	250	75
Cotswold	1500 *	1145	1355	250	75
Victorian Corbel	1500 *	1200	1355	300	75
Kensington	1350	1133	1300	207	75
Hexham	1350	1133	1300	207	75
Hexham	1500	1258	1450	207	75
Corinthian	1500	1140	1395	230	75
Flat Victorian	1500*	1145	1355	180	75
Verona	1500	1150	1425	250	75
William IV	1500	1170	1375	300	75



\* Shelf length of 1350mm (53") also available.



# ROMAN STONE MANTELS

The Integra Collection offers a range of beautiful man-made marble mantelpieces, known as micro marbles. Micro marbles are available in Roman Stone (Crema Marfil colour) and Polar White.

Micro marbles consist of 95% pure marble and 5% resin. This mixture creates additional strength and has the advantage of being consistent in colouration, whereas pure marbles such as Crema Marfil are liable to colour variation with veining and fissures.



\* Kensington



\* Kensington



Ripon



\* Hexham 1350



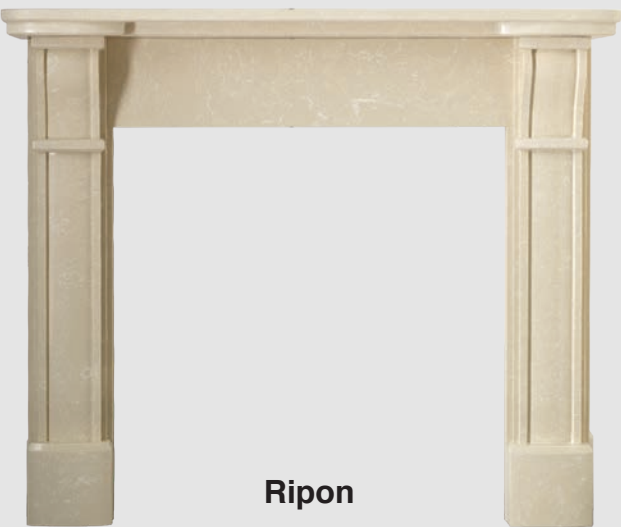
\* Hexham 1500



\* Hexham 1350



\* Hexham 1500



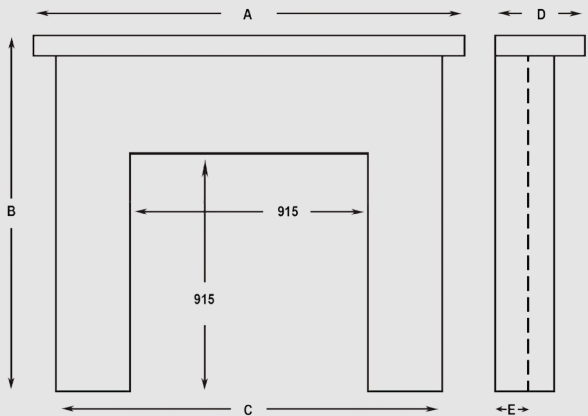
Ripon



\* Durham

## Mantel Dimensions

	A	B	C	D	E
Athena	1500	1150	1355	250	75
	1350	1150	1355	250	75
Durham	1350	1165	1270	300	75
	1500	1170	1350	300	75
Flat Victorian	1500	1145	1355	205	75
	1350	1145	1275	205	75
Hexham	1350	1133	1300	207	75
	1500	1258	1450	207	75
Kensington	1350	1133	1300	207	75
Ripon	1350	1190	1285	290	75



measurements in millimetres

\* The Durham, Hexham, Kensington and Verona are available in pure **Spanish Crema Marfil** (see page 12).



SLATE STONE



Kensington



Hexham 1350



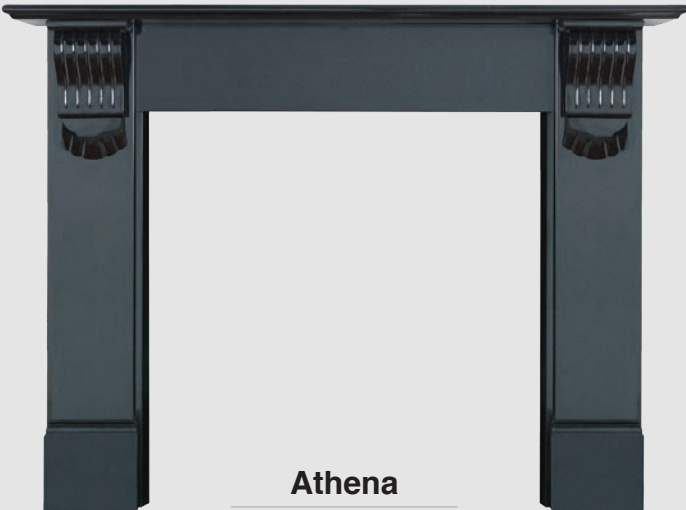
Hexham 1500

BLACK GRANITE



Flat Victorian

Honed or Polished



Athena

Polished Granite



Durham

Polished Granite

HEARTHES

The Integra Collection boasts a range of beautiful, practical and robust hearths to suit the Integra appliance of your choice.

Suitable materials used for our hearths include honed or polished black granite, slate stone and limestone.

Hearths come in three different styles:

**Boxed & Lipped:**

These are traditional hearths with 20mm thickness and 30mm risers below.

**Munro:**

These are more robust and contemporary having a 30mm thickness and 20mm risers below. Munro hearths are softer on the eye and to the touch having attractive rounded bullnose edges.

**Solid Fuel:**

Hearths used for wood burning or solid fuel appliances are traditionally cut into four sections and fixed back together to allow for expansion.

For use with Solid Fuel Integra, CastTec supply sturdy sectioned Munro hearths in honed or polished black granite.

Solid Fuel Munro



**Boxed & Lipped**

Polished Granite



Honed Granite

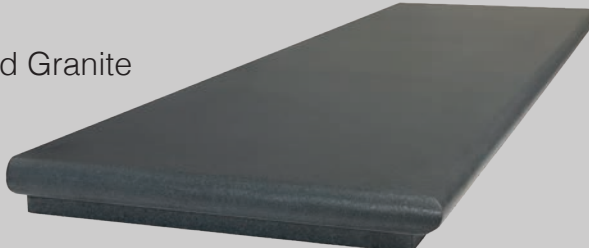


**Munro Bullnose**

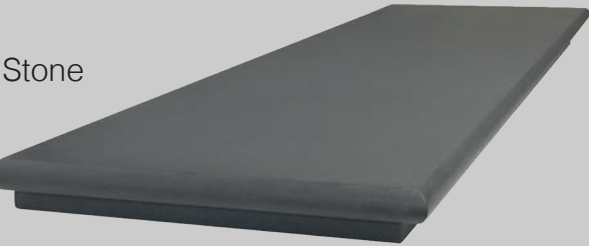
Polished Granite



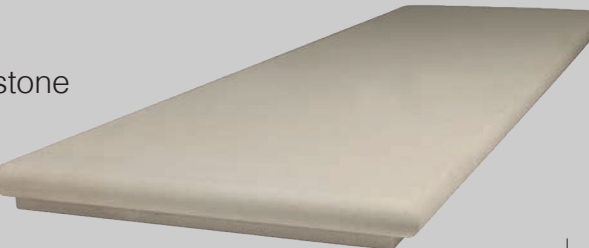
Honed Granite



Slate Stone



Limestone





# OAK MANTELS

The CastTec Mantelpiece Collection is a range of beautiful hand-crafted mantelpieces manufactured in solid oak.

Available in seven designs, some mantels sport a traditional corbel, others are plain or there is the ornate splendour of the Bamburgh.

All mantels are available in a light or medium oak stain, or they can be supplied with no finish to enable you to stain, wax or lacquer in a bespoke manner.

Our mantels are manufactured to an exceptionally high standard using craftsman with over 20 years' experience. Whilst only solid oak is used in the construction of our mantels, sometimes it is necessary to join wood pieces together sympathetically in order to reduce wastage.

All mantel designs have an internal rebate of 75mm (3") providing the space to accommodate any Integra cast-iron insert.

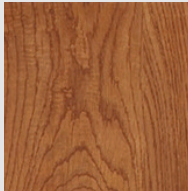


Bamburgh

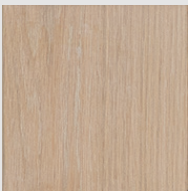
### Mantel Finishes



Light Oak



Medium Oak



No Finish



Rothbury



Brampton



Coniston



Sherwood



Flat Victorian

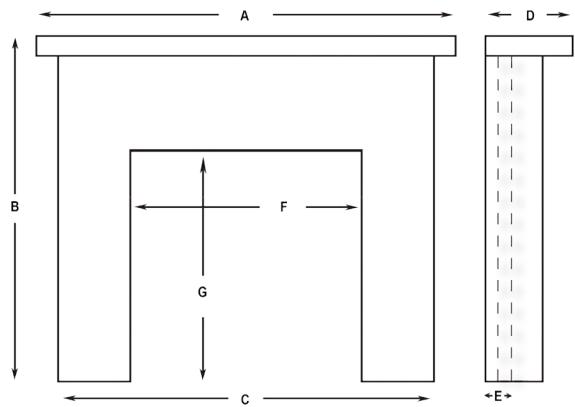


Balmoral

### Mantel Dimensions

	A	B	C	D	E	F	G
Balmoral	1370	1135	1230	215	75	915	915
Bamburgh	1630	1310	1460	304	75	1020	990
Brampton	1370	1150	1285	220	75	915	915
Coniston	1370	1190	1275	190	75	915	915
Flat Victorian	1450	1150	1335	200	75	915	915
Rothbury	1370	1150	1230	180	75	915	915
Sherwood	1350	1175	1280	220	75	915	915

measurements in millimetres





# ARCHED INSERT GALLERY

A Gallery of Integra Arched and Tiled inserts for Gas Fires are shown on these two pages.

Electric and Solid Fuel Integra equivalents are similar in design to that for gas but have been modified to accommodate the relevant engines. Electric Integra only has arched insert design options.



Royal



Majestic



Regal



Viscount



Marquis



Ashbourne



Ashbourne Black

## CAST-IRON CARE

### PACKAGING

Your Integra cast-iron fireplace is packaged so as to minimise exposure to adverse elements and should reach you in perfect condition.

Your fireplace should be stored in a warm, dry environment and remain packaged until it is ready to be installed. This will prevent accidental damage being caused, which will not be covered under warranty.

### CLEANING

Your Integra casting requires only the minimum upkeep and it should remain in superb condition for many years.

Matt Black finishes can be maintained simply by dusting with a dry paintbrush. Cast Tec matt black stove paint is available for touching up if necessary but expert advice should be taken before application.

Antique finishes can be maintained simply by brushing with a dedicated shoe or polishing brush. Grate polish should only be applied if the original finish becomes too tarnished.

Polished and Highlight Polished areas can be wiped clean with a dry cloth, especially if an 'orange' colour appears on the waxed polished surface after fitting. Severe tarnishing on polished areas can be improved by using a very fine wire wool.

### WARNING

Cast-iron products are vulnerable to rust and tarnishing if exposed to dampness or water. Avoid using damp clothes, water based liquids, furniture polish, detergents, oils, grease etc. on the surface of the casting. Should your fireplace become wet for any reason, dab it gently with a dry cloth. This should prevent any tarnishing or rust from forming.

It is normal for some discolouration to occur to the working parts of a cast-iron fireplace, especially where it comes into contact with severe heat or a naked flame. This discolouration will not effect the strength or practicality of the parts affected.

# TILED INSERT GALLERY



Aston



Aston Antiqued



Eden



Glen



Glen Black



Jesmond



Jesmond Black



Oxford



Oxford Black

## GENERAL INFORMATION

Products shown in this brochure are manufactured for Cast Tec Ltd., who, with a professional group of companies, distribute them exclusively in the U.K. Goods must be checked prior to installation, as no responsibility will be accepted thereafter for the redecoration, removal or re-installation of products.

Faulted goods must be reported within 48

hours of delivery or as soon as practicable.

Suitably qualified installers should carry out installation of Integra appliances. No responsibility will be accepted for damage or problems arising from an incorrect or unqualified installation.

Cast Tec Ltd., reserve the right to delay or withdraw products, change designs,

specifications or materials without prior notice due to continuous product development or supply issues.

Photographs and designs shown in this brochure are the copyright and design rights of Cast Tec Ltd. and can only be used or copied with permission.



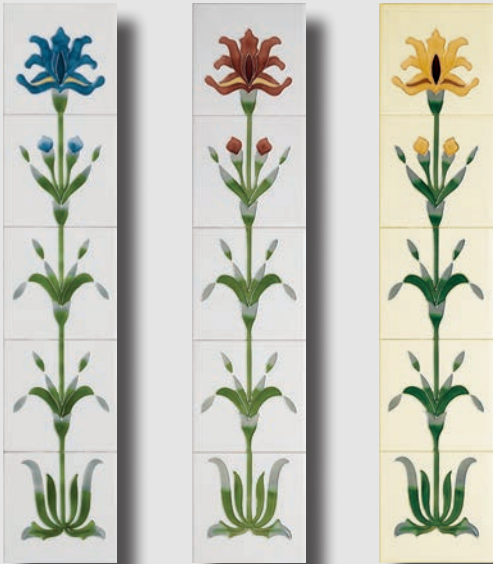
# HAND PAINTED TUBELINE TILES

Tubeline Tiles were traditionally made to withstand the high temperatures generated by a working fireplace and performed the practical function of reflecting heat into the room when placed

at an angle facing inward. With a choice of six designs and various colour options, two runs of five tiles make up a set to fit into an Integra tiled insert. Poppy

tile sets include a left and right-handed design. Our hand painted tubeline tiles are manufactured in the UK in the traditional way and will be subject to colour variation and crazing.

Flag Iris



Ivory Blue  
Ivory Burgundy  
Honey Yellow

Tulip



Ivory Blue  
Ivory Lilac  
Ivory Burgundy

Thistle of Tay



Ivory Blue  
Ivory Lilac  
Ivory Burgundy

Foxglove



Ivory Blue  
Ivory Lilac  
Ivory Burgundy



Honey Yellow

Mediterranean Poppy



Ivory Blue  
Green Burgundy  
Ivory Burgundy  
Honey Yellow

Field Poppy



Ivory Blue  
Ivory Lilac  
Ivory Red  
Ivory Yellow

## CAST-IRON SLEEVES

Cast-iron Sleeves are an alternative to the more colourful tubeline tiles.

Sleeves are supplied in pairs

to suit an Integra casting and these are available in a matt black, antique or highlight polished finish.

There is a choice of four cast-iron sleeve designs and the Mediterranean Poppy has a left and right handed design.

Polished



Lily Urm  
Med Poppy  
Tulip  
Art Deco

Matt Black

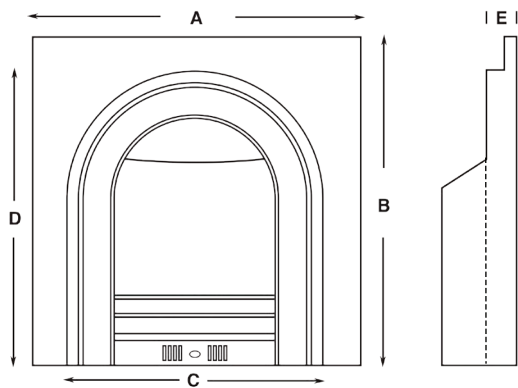


Lily Urm  
Med Poppy  
Tulip  
Art Deco

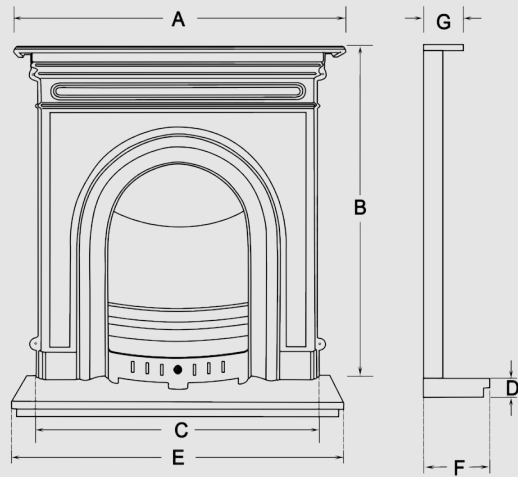


# CAST-IRON SPECIFICATIONS

Measurements are in millimetres and can vary due to the manufacturing process.



## Combinations



Gas	
A	1120
B	1120
C	1007
D	50
E	1050
F	380
G	180

Electric*	
A	1130
B	1120
C	1015
D	50
E	1050
F	305
G	200

A Solid Fuel Combination is available upon request by combining a gas outer fascia and a solid fuel inner fascia.

## Gas Inserts

	A	B	C	D	E
Ashbourne	938	939	725	855	55
Aston	968	958	888	877	70
Eden	968	958	888	877	70
Glen	968	958	888	877	70
Jesmond	965	960	885	875	80
Majestic	944	941	722	860	55
Marquis	944	941	722	860	55
Oxford	967	963	887	880	62
Regal	944	941	722	860	55
Royal	944	941	722	860	55
Viscount	944	941	722	860	55

A: Width. B: Height. C & D: Minimum mantel aperture required E: Depth

## Electric Inserts\*

	A	B	C	D	E
Ashbourne	955	955	725	855	50
Marquis	944	948	740	844	55
Regal	944	948	740	844	55
Royal	944	948	740	844	55
Viscount	944	948	740	844	55

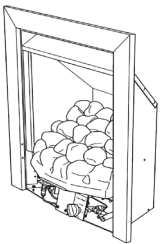
A: Width. B: Height. C & D: Minimum mantel aperture required E: Depth

## Solid Fuel Inserts

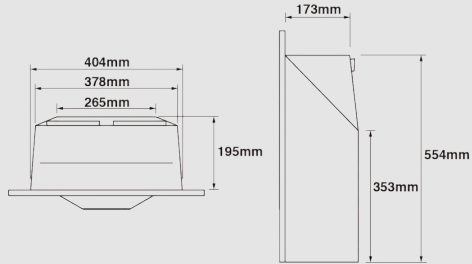
	A	B	C	D	E
Ashbourne	938	939	725	855	50
Aston	965	957	885	878	65
Majestic	944	940	725	860	50
Oxford	965	963	885	878	65
Royal	944	940	725	860	50

A: Width. B: Height. C & D: Minimum mantel aperture required E: Depth

# GAS FIRE SPECIFICATIONS



## Convector Plus

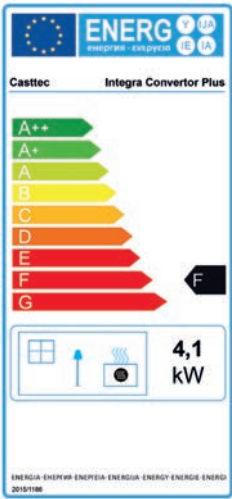


### Technical Data

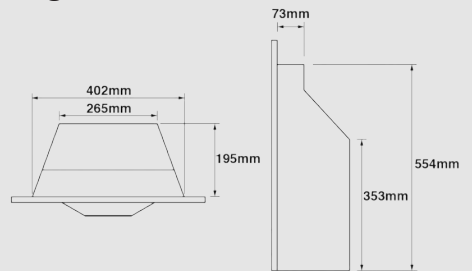
Output High	4.1kW
Efficiency	67%
L.P.G. Option	No

### Control Options

Manual	Yes
Slide	Yes
Remote	Yes



## Integra HO



### Technical Data

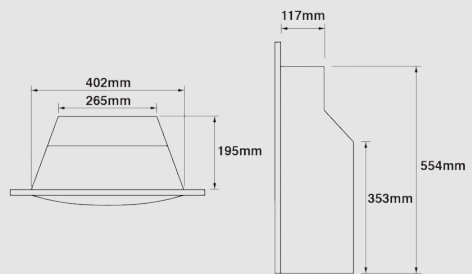
Output High	2.9kW
Efficiency	41%
L.P.G. Option	Yes

### Control Options

Manual	Yes
Slide	Yes
Remote	Yes

INTEGRA HO IS NOT SUITABLE FOR PRIMARY HEATING PURPOSES

## Integra HE (Glass Fronted)

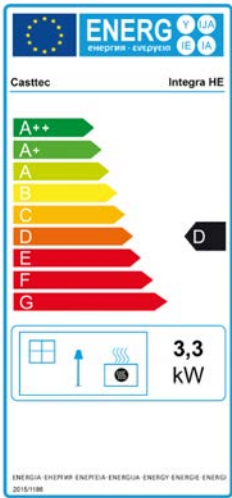


### Technical Data

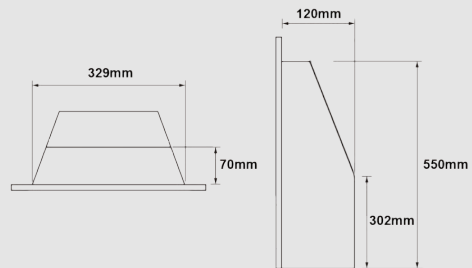
Output High	3.3kW
Efficiency	80%
L.P.G. Option	No

### Control Options

Manual	Yes
Slide	Yes
Remote	Yes



## Classic Multiflue



### Technical Data

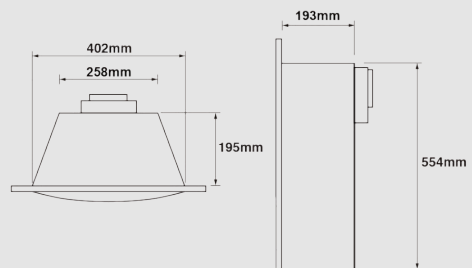
Output High	2.8kW
Efficiency	40%
L.P.G. Option	No

### Control Options

Manual	Yes
Slide	No
Remote	No

CLASSIC MULTIFLUE IS NOT SUITABLE FOR PRIMARY HEATING PURPOSES

## Balanced Flue

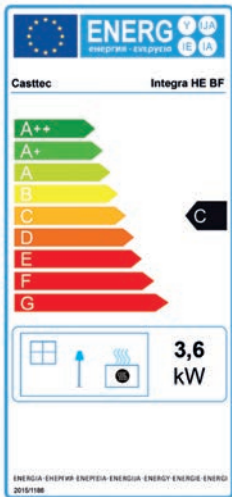


### Technical Data

Output High	3.6kW
Efficiency	88%
L.P.G. Option	No

### Control Options

Manual	Yes
Slide	No
Remote	Yes







**CASTTEC**

[www.casttec.co.uk](http://www.casttec.co.uk)

